

JASDAN NAGARPALIKA - JASDAN
DIST. :- RAJKOT

SCHEME :- NIRMAL GUJARAT 2.0

NAME OF WORK :- DEVELOPMENT OF GVP POINT

LOCATION :- NEAR GOVERNMENT HOSPITAL, AT. JASDAN

Govrnment
Hospital

Exi.CC Road

Ex!CC Road

Paving Block
12.50 x 3.50

GVP POINT

Cons. Engineer
" **DESIGN POINT** "
Amreli

City Manager SWM
Jasdan Nagarpalika
Jasdan

Chief Officer
Jasdan Nagarpalika
Jasdan

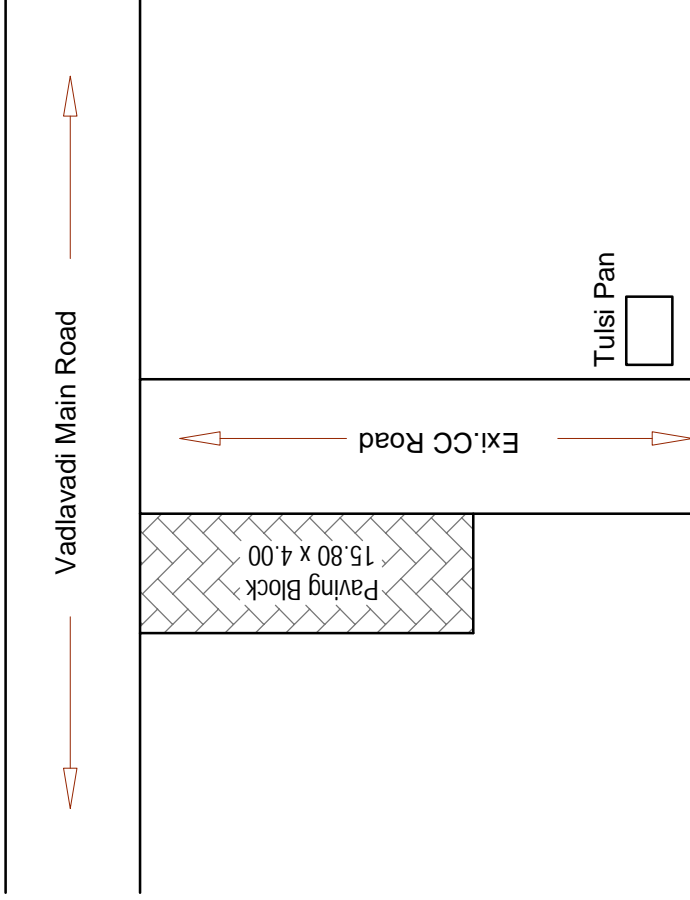
President
Jasdan Nagarpalika
Jasdan

DIST. :- RAJKOT

SCHEME :- NIRMAL GUJARAT 2.0

NAME OF WORK :- DEVELOPMENT OF GVP POINT

LOCATION :- VADLA VADI AREA, TULSI PAN STREET, DHORIYA KATHO, AT. JASDAN



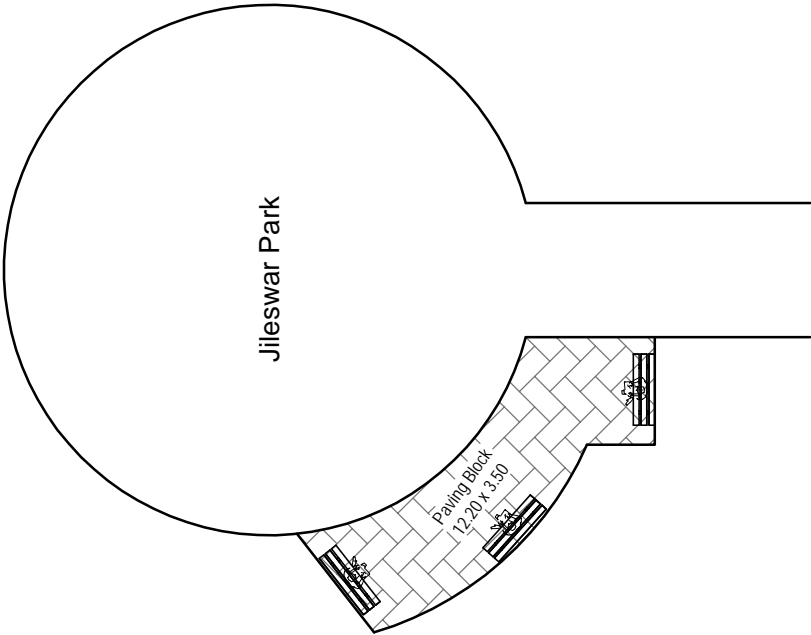
GVP POINT

Amreli

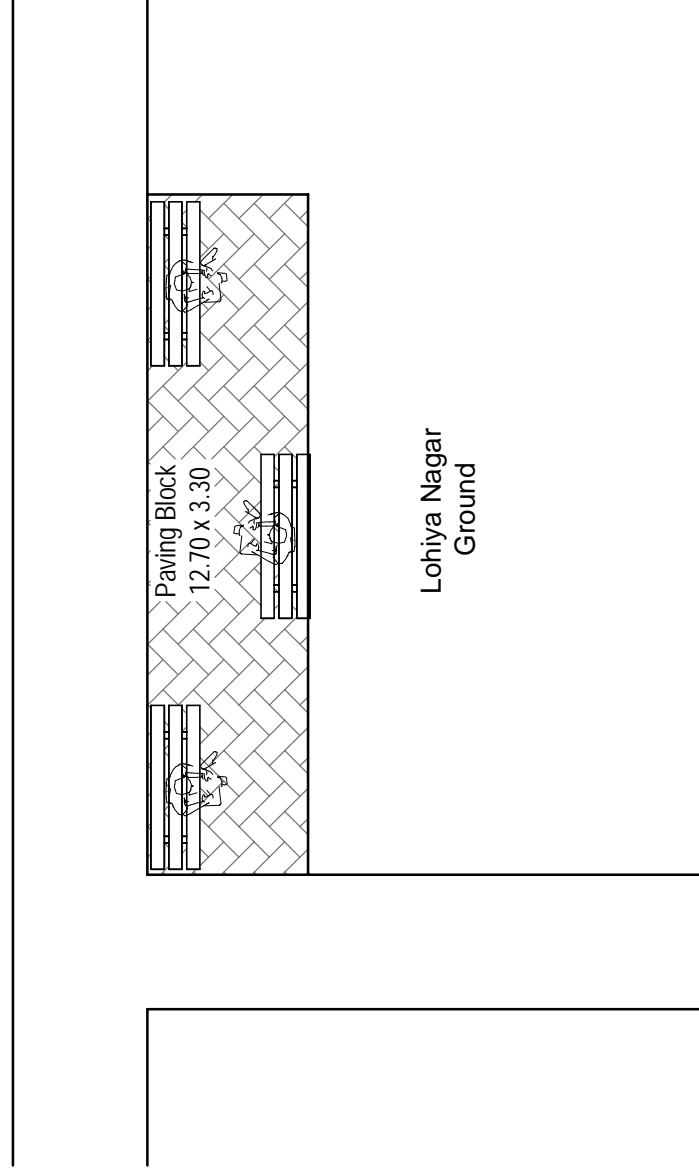
Jasdan

Jasdan

Jasdan

<div> <div>JASDAN NAGARPALIKA - JASDAN</div> <div>DIST. :- RAJKOT</div> <div>SCHEME :- NIRMAL GUJARAT 2.0</div> <div>NAME OF WORK :- DEVELOPMENT OF GVP POINT</div> <div>LOCATION :- JILESWAR PARK GOLAY, AT. JASDAN</div> </div>			
<div>  </div>			
GVP POINT			
<div> <div>Cons. Engineer</div> <div>" DESIGN POINT "</div> <div>Amreli</div> </div>	<div> <div>City Manager SWM</div> <div>Jasdan Nagarpalika</div> <div>Jasdan</div> </div>	<div> <div>Chief Officer</div> <div>Jasdan Nagarpalika</div> <div>Jasdan</div> </div>	<div> <div>President</div> <div>Jasdan Nagarpalika</div> <div>Jasdan</div> </div>

JASDAN NAGARPALIKA - JASDAN
DIST. :- RAJKOT
SCHEME :- NIRMAL GUJARAT 2.0
NAME OF WORK :- DEVELOPMENT OF GVP POINT
LOCATION :- LOHIYANAGAR GROUND, AT JASDAN



GVP POINT

Cons. Engineer
" **DESIGN POINT** "
Amreli

City Manager SWM
Jasdan Nagarpalika
Jasdan

Chief Officer
Jasdan Nagarpalika
Jasdan

President
Jasdan Nagarpalika
Jasdan

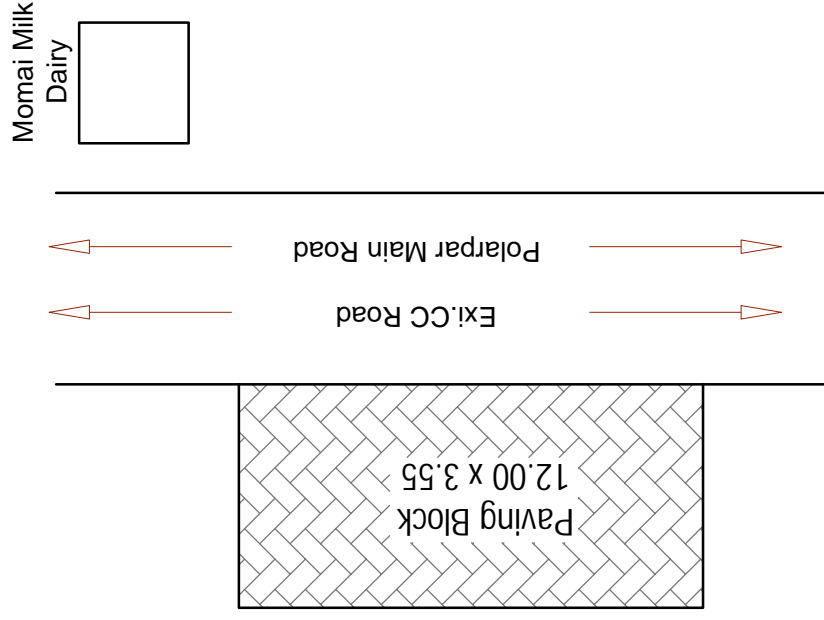
<div>JASDAN NAGARPALIKA - JASDAN</div> <div>DIST. :- RAJKOT</div> <div>SCHEME :- NIRMAL GUJARAT 2.0</div> <div>NAME OF WORK :- DEVELOPMENT OF GVP POINT</div> <div>LOCATION :- GOKUL CHOWK, AT. JASDAN</div>			
<div><div><div>Gokul Chowk</div><div><div><div>Paving Block</div><div>15.60 x 4.05</div></div><div><div>Exi.CC Road</div><div>Hospital Road</div></div></div></div></div>			
GVP POINT			
Cons. Engineer " DESIGN POINT " Amreli	City Manager SWM Jasdan Nagarpalika Jasdan	Chief Officer Jasdan Nagarpalika Jasdan	President Jasdan Nagarpalika Jasdan

JASDAN NAGARPALIKA - JASDAN
DIST. :- RAJKOT

SCHEME :- NIRMAL GUJARAT 2.0

NAME OF WORK :- DEVELOPMENT OF GVP POINT

LOCATION :- POLARPAR ROAD,OPP.MOMAI MILK DAIRY, AT. JASDAN



GVP POINT

Cons. Engineer
" **DESIGN POINT** "
Amreli

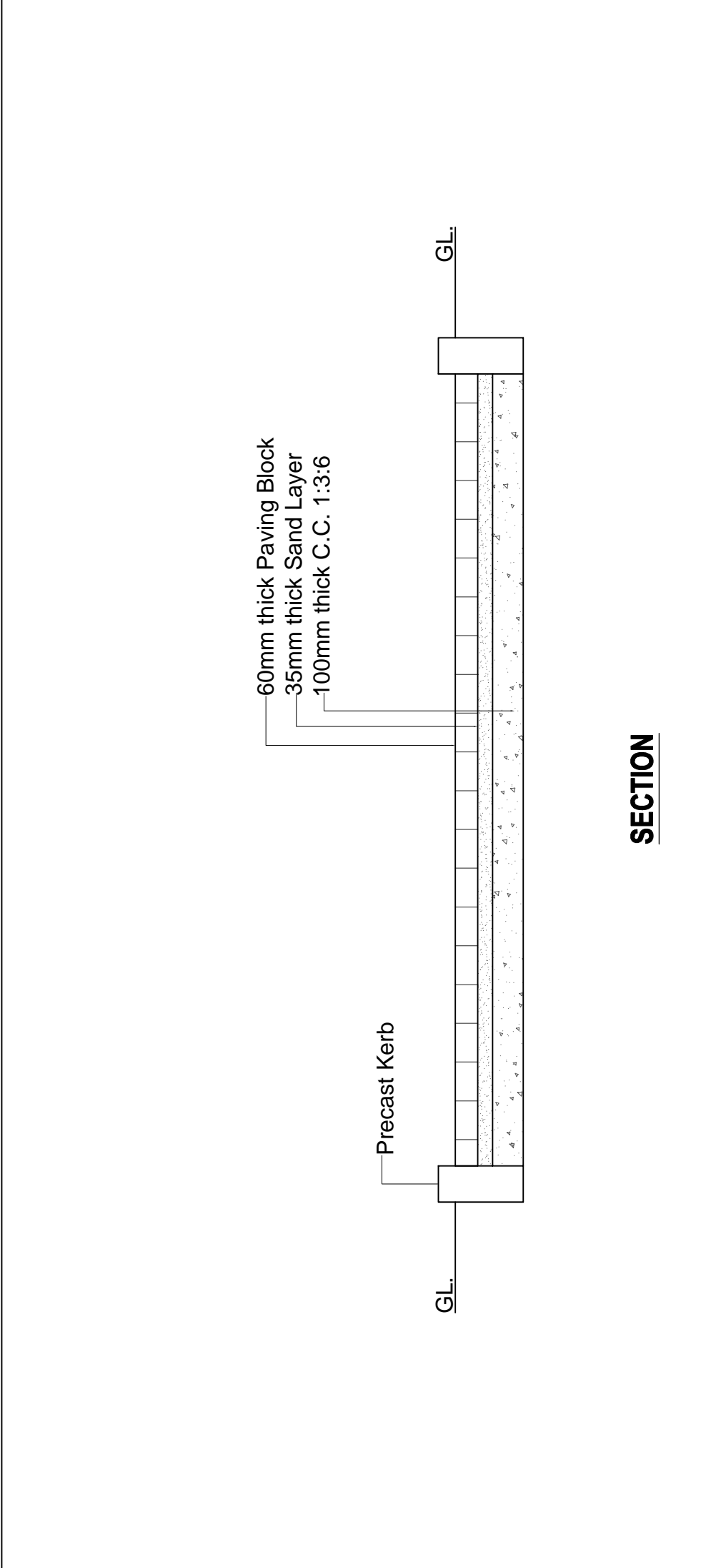
City Manager SWM
Jasdan Nagarpalika
Jasdan

Chief Officer
Jasdan Nagarpalika
Jasdan

President
Jasdan Nagarpalika
Jasdan

<div>JASDAN NAGARPALIKA - JASDAN</div> <div>DIST. :- RAJKOT</div> <div>SCHEME :- NIRMAL GUJARAT 2.0</div> <div>NAME OF WORK :- DEVELOPMENT OF GVP POINT</div> <div>LOCATION :- POLARPAR ROAD,BESIDE RAIVER STAND, AT. JASDAN</div>			
<div><div><div></div><div></div></div><div><div>Exi.CC Road</div><div>Polarpar Main Road</div></div><div><div><div><div><div></div><div></div><div></div><div></div></div><div><div></div><div></div><div></div><div></div></div><div><div></div><div></div><div></div><div></div></div><div><div></div><div></div><div></div><div></div></div></div><div><div>Paving Block</div><div>11.50 x 2.70</div></div><div><div></div><div></div><div></div><div></div></div><div><div></div><div></div><div></div><div></div></div></div><div><div>Bhadar River</div><div></div></div></div></div>			
GVP POINT			
Cons. Engineer " DESIGN POINT " Amreli	City Manager SWM Jasdan Nagarpalika Jasdan	Chief Officer Jasdan Nagarpalika Jasdan	President Jasdan Nagarpalika Jasdan

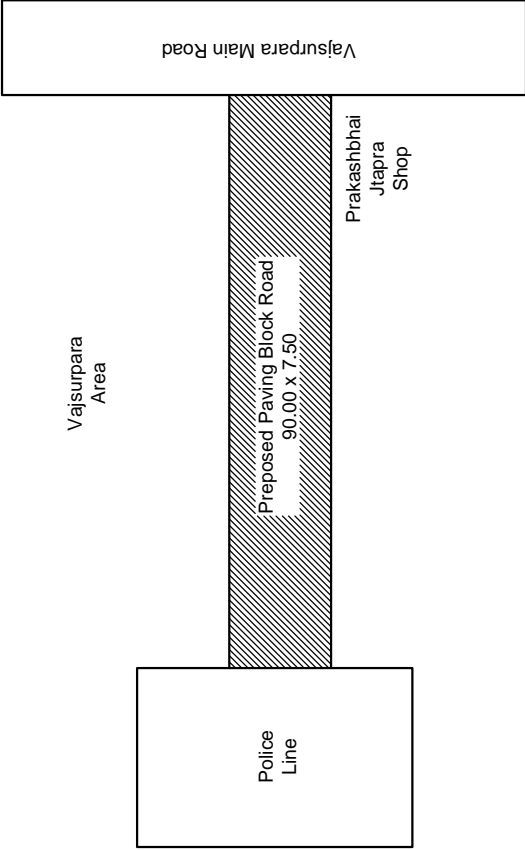
JASDAN NAGARPALIKA - JASDAN
DIST. :- RAJKOT
SCHEME :- NIRMAL GUJARAT 2.0
NAME OF WORK :- DEVELOPMENT OF GVP POINT



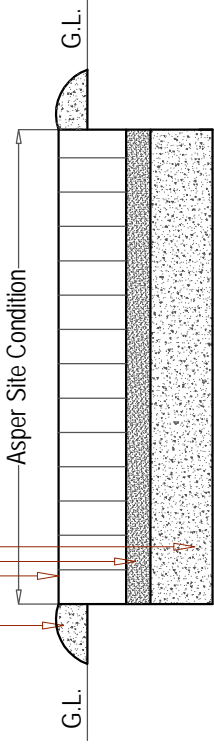
SECTION

Cons. Engineer " DESIGN POINT " Amreli	City Manager SWM Jasdan Nagarpalika Jasdan	Chief Officer Jasdan Nagarpalika Jasdan	President Jasdan Nagarpalika Jasdan
--	--	---	---

LOCATION



_____ Cement Vata
60mm thick M-300 Pre-cast rubber dye / steel
dye inter locking concrete block
_____ 0.10 thick PCC 1:3:6
_____ 0.15 thick WBM Grade II

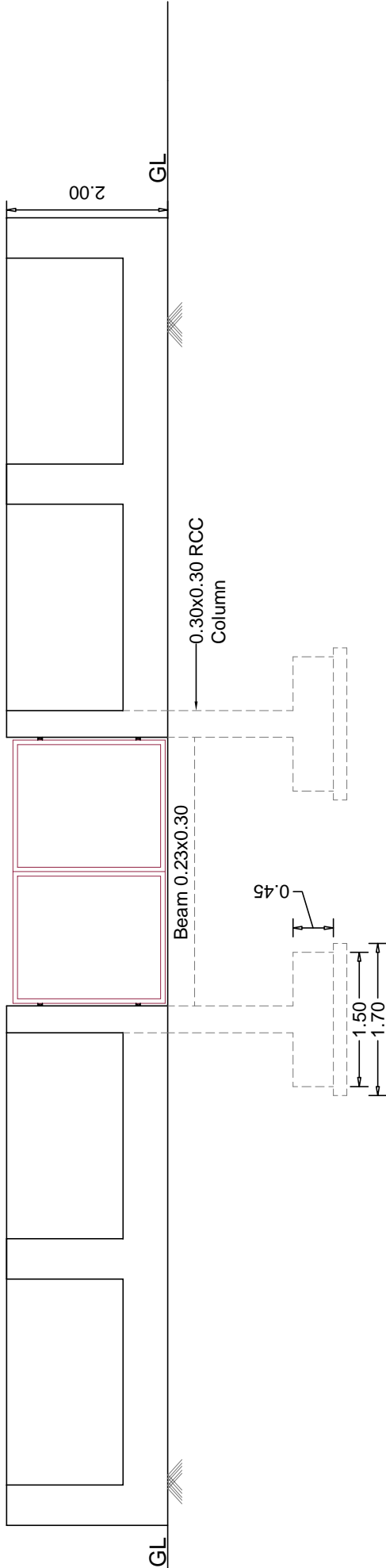


PROPOSED PAVING BLOCK ROAD
TYPICAL SECTION- XX

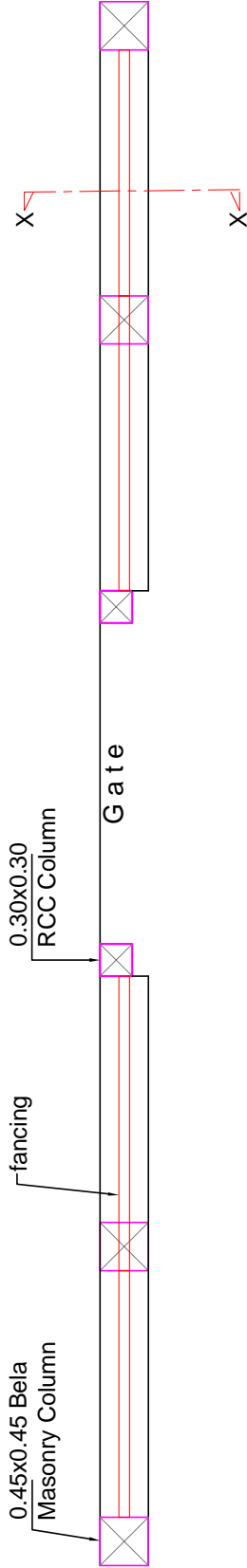
PROPOSED PAVING BLOCK ROAD DETAIL PLAN

JASDAN NAGARPALIKA - JASDAN DIST.: RAJKOT		Sign of Constl. Engineer	<div><div><div>ROAD, OFFICE : First Floor, Banesh Complex, Station Road, Anand - 385501 (Guj.) Email : designpoint@yahoo.com</div><div><div>JPM</div><div>Design</div><div>Point</div></div><div>THANK YOU FOR CHOOSING US</div></div><div>Svrl. App. Consulting Civil Engineer</div></div>	MUNICIPAL ENGINEER Jasdan Nagarpalika Jasdan	CHIEF OFFICER Jasdan Nagarpalika Jasdan
SCHEME	SJMMSVY YEAR 2025-26				
NAME OF WORK	CONSTRUCTION WORK OF PAVING BLOCK ROAD				
LOCATION	W-2, Bharwad Area, Neae Old Police station, Prakashbhai Jatapara House to Police Line Corner				
DRAWING TITLE	PROPOSED PAVING BLOCK ROAD DETAIL PLAN				
DRAWN BY	HITESH PARMAR				

JASDAN NAGARPALIKA - JASDAN
DIST .:- RAJKOT
SCHEME :- SJMSVY YEAR 2025-26
NAME OF WORK :- CONSTRUCTION WORK OF GATE
Location :- AMEDKARBHAVAN , At. Jasdan



Front Elevation



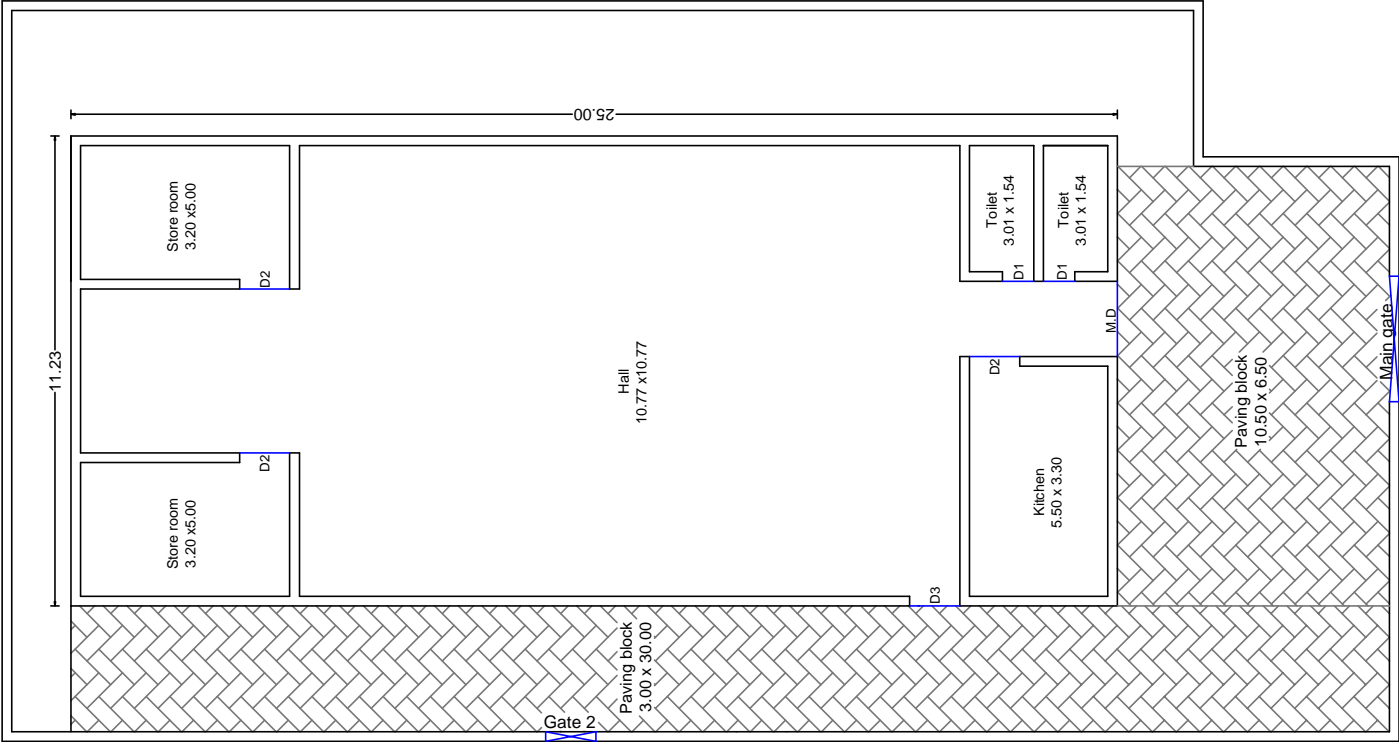
Compound Wall Plan

Cons. Engineer
DESIGN POINT
Amreli

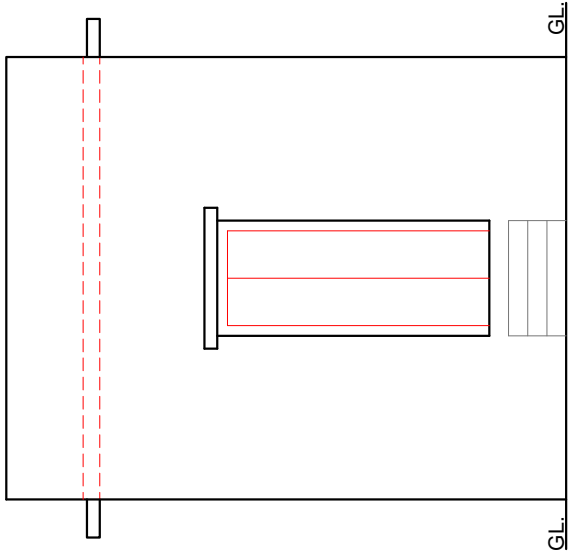
Municipal Engineer
Jasdan Nagarpalika
Jasdan

Chief Officer
Jasdan Nagarpalika
Jasdan

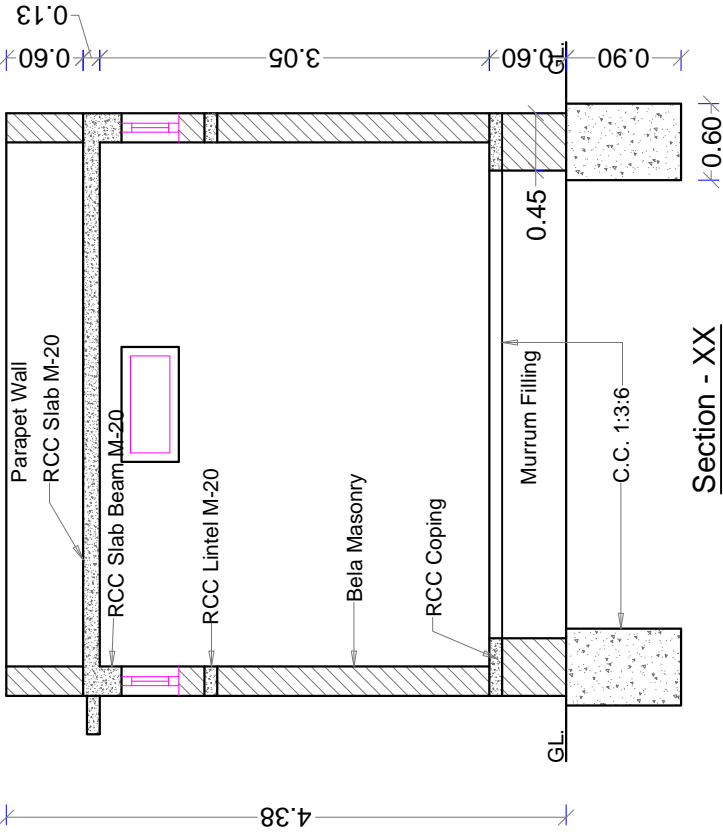
JASDAN NAGARPALIKA - JASDAN DIST :- RAJKOT	
SCHEME : SJMMSVY YEAR 2025-26	
NAME OF WORK RENOVATION AMBEDKAR BHAVAN	
CONSL. ENGINEER :	DESIGN POINT CONSULTING CIVIL ENGINEER FIRST FLOOR, GANESH COMPLEX STANTON ROAD, AMBELI - 385601 PHONE No. 2283553, 221968
APPROVED BY :	Municipal Engineer Jasdan Nagarpalika Jasdan
	Chief Officer Jasdan Nagarpalika Jasdan
	President Jasdan Nagarpalika Jasdan



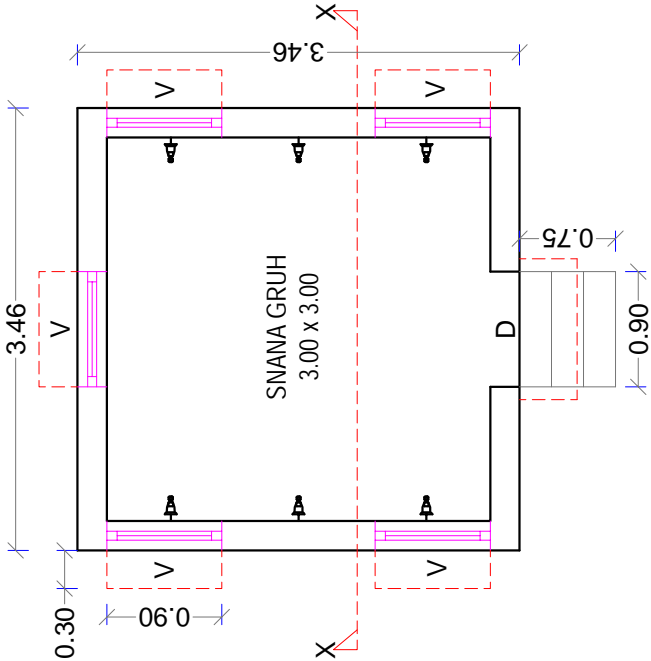
EXI. GROUND FLOOR PLAN



Front Elevation



Section - XX



Ground Floor Plan

JASDAN NAGARPALIKA - JASDAN

DIST. :- RAJKOT

SCHEME :- MLA GRANT (YEAR-2025-26)

NAME OF WORK :- CONSTRUCTION WORK OF SNANA GRUH

Location :- Vajsur Para, At. Jasdan

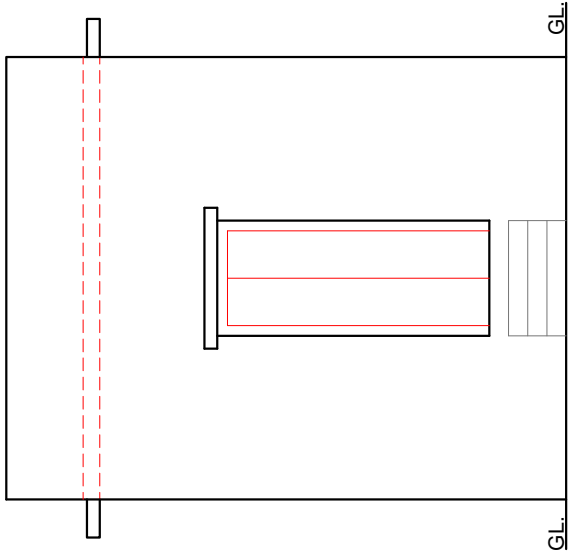
Door & Window Schedule		Area Table	
Door	D	0.90 x 2.13	1 No.
Venti.	V	0.90 x 0.45	5 No.
		G.F. Built Up Area.....11.97 Sqmt.	

Cons. Engineer
DESIGN POINT
Amreli

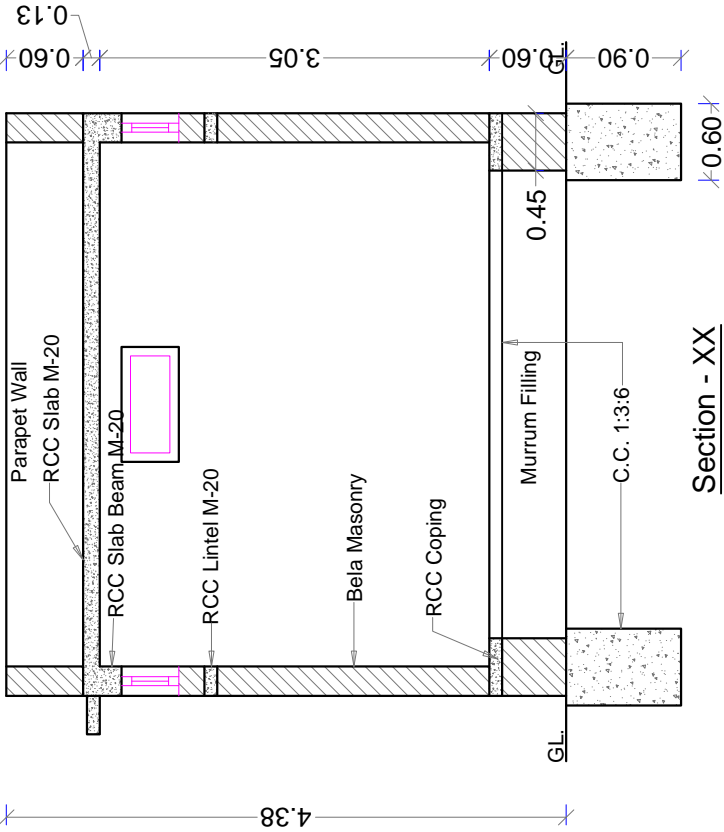
Municipal Engineer
Jasdan Nagarpalika
Jasdan

Chief Officer
Jasdan Nagarpalika
Jasdan

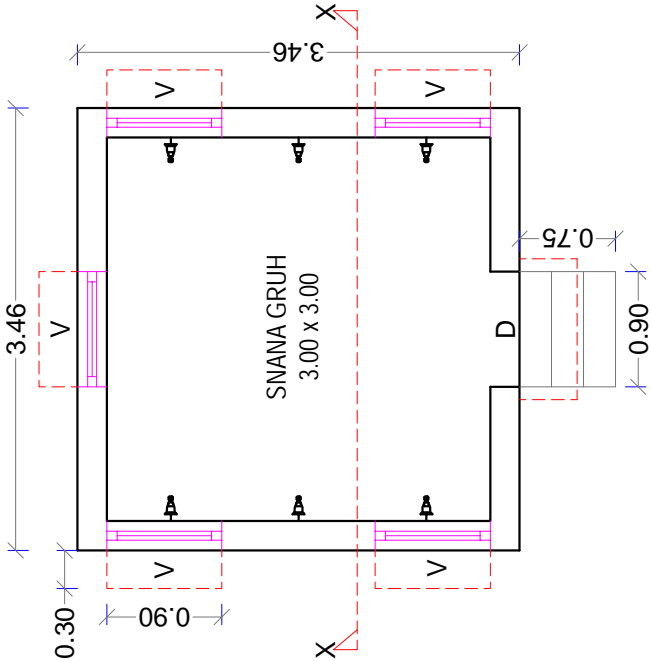
<div>JASDAN NAGARPALIKA - JASDAN</div> <div>DIST. :- RAJKOT</div> <div>SCHEME :- MLA GRANT (YEAR-2025-26)</div> <div>NAME OF WORK :- CONSTRUCTION WORK OF SNANA GRUH</div> <div>Location :- Vajsur Para, At. Jasdan</div>				<div><div>Sports Wall</div><div>Proposed SNANA GRUH</div><div>Bapa Sitaram Madhuli</div><div>Kamalapur - Vajsur Par Road</div></div>			<div>Site Plan</div>		<div>Cons. Engineer DESIGN POINT Amreli</div>		<div>Municipal Engineer Jasdan Nagarpalika Jasdan</div>	<div>Chief Officer Jasdan Nagarpalika Jasdan</div>	<div>President Jasdan Nagarpalika Jasdan</div>
---	--	--	--	--	--	--	----------------------	--	---	--	---	--	--



Front Elevation



Section - XX



Ground Floor Plan

JASDAN NAGARPALIKA - JASDAN

DIST. :- RAJKOT

SCHEME :- MLA GRANT (YEAR-2025-26)

NAME OF WORK :- CONSTRUCTION WORK OF SNANA GRUH

Location :- Bileswar Society, At. Jasdan

Door & Window Schedule		Area Table	
Door	D	0.90 x 2.13	1 No.
Venti.	V	0.90 x 0.45	5 No.
		G.F. Built Up Area.....11.97 Sqmt.	

Cons. Engineer
DESIGN POINT
Amreli

Municipal Engineer
Jasdan Nagarpalika
Jasdan

Chief Officer
Jasdan Nagarpalika
Jasdan

<div>JASDAN NAGARPALIKA - JASDAN</div> <div>DIST. :- RAJKOT</div> <div>SCHEME :- MLA GRANT (YEAR-2025-26)</div> <div>NAME OF WORK :- CONSTRUCTION WORK OF SNANA GRUH</div> <div>Location :- Bileswar Society, At. Jasdan</div>			
<div><div></div><div>Jasdan - Atkot Bypass</div><div><div><div>Madhuram Marble</div><div>Road</div><div><div>Prajapati Samaj Wadi</div><div>Proposed SNANA GRUH</div><div>Bharwad Samaj</div></div></div></div></div>			
Site Plan			
Cons. Engineer DESIGN POINT Amreli	Municipal Engineer Jasdan Nagarpalika Jasdan	Chief Officer Jasdan Nagarpalika Jasdan	President Jasdan Nagarpalika Jasdan